



Simple, Intuitive, Automatic.

The StuDiomaster Professional Auto 4 offers an advanced level of ease in sound system installations. It's the quickest, easiest, and most effective way to set up a multiple-mic room without requiring an operator to monitor the board. With the help of the Auto 4 you can 'fit it' - 'forget it' & expect the same level of performance day in & day out. With the unique 'Auto Sense' technology & 'NOM' the StuDiomaster Professional Auto 4 is sure to be one of the best auto-mixing solutions currently available.

What is an Automatic Mixer?

An automatic microphone mixer is a live sound mixing device that automatically attenuates the strength of a microphone's audio signal when it is not being used. They reduce the hiss, rumble, reverberation and noise that occur when several microphones operate simultaneously. They are typically used to mix panel discussions on television talk shows, at conferences, seminars etc. Automatic Mixers are frequently employed in settings where it is expected that a live sound operator may not be present, such as boardrooms, conference facilities, schools, houses of worship. A high quality Automatic Mixer like the StuDiomaster Professional Auto 4 completely avoids the necessity of having an operator.

Auto 4 - The Power of 4

Auto Sense

The 'Auto Sense' Technology in the Auto 4 automatically gates microphones (turns on or off), based on the threshold & priority settings. This ensures pick up of only speech & not continuous backgrounds & ambient sounds like Air Conditioners etc.

Threshold Modes

Three threshold settings available on-board, a feature unique to the Auto 4. Loud-Normal-Soft: As the names suggests, threshold levels for the different channels can be set as per general speech levels of that person speaking. Based on this, the Auto 4 can accurately control the auto mixing.

NOM

NOM (Number of Open Mics) based gain attenuation. The Auto 4 – automatically adjust gain based on the number of operating microphones. It works to provide the gain, stability, & low noise qualities of a single open mic with the benefits of multiple mics

Infinite Linking

Two or More Auto 4's can be linked to each other with the help of a simple CAT5 cable. There is no limit to number of Auto 4's that can be cascaded. The use of locally available CAT5 cables, avoids the need to buy expensive & proprietary accessories required by currently available Auto-Mixers.

Features:

Inputs

- Balanced XLR & 6.3mm Jack Input Connectors.
- Switchable priority on each channel.
- Switchable phantom supply on each mic channel.
- Signal & Clip LED Per channel.
- Lockout LED indicating the high priority speaker is active.

Priority

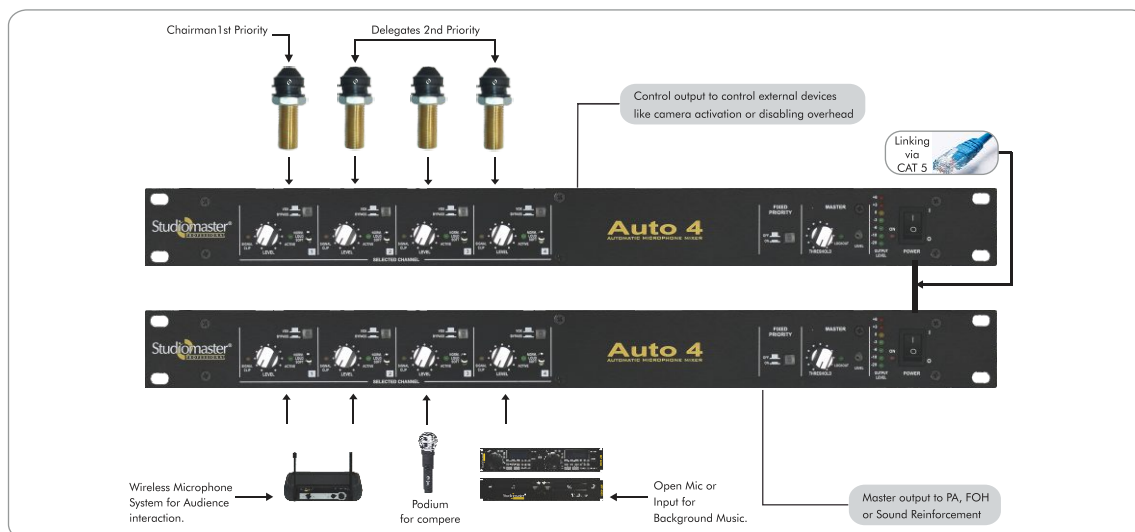
- Programmable priority via individual channels setup.
- Alternatively a 'Fixed' priority, with a sequential hardwired priority.
- MIC / Line (for Wireless Mic) switchable per channel.
- Selectable 'Ducking' Level (-12dB & -20db) for all non-priority channels.
- The Unique 'Voice-Level' threshold set-up to allow flexibility of setting without the complexity of a constant varying threshold.
- Vox bypass for emergency channels or Background Music application.

Control Functions

- Switchable 'Last MIC On' that eliminates ambience dropouts, ensuring that there is always some background ambience present even if no one is currently speaking.
- Insert to connect to feedback destroyers or other dynamic processors. .
- Control signal (5V) to activate external devices like a camera, disabling overhead speakers, etc.
- Infinite Linking of Multiple Auto 4's with a simple CAT5 cables.
- Works on external 24V DC.

Eight Mic Conference Set Up

Following is one of the numerous configurations that the Studiomaster Professional auto 4 can be used in. Possible Setup for a company's annual general meeting. (The Figure below is used solely for representation)



Technical Specifications:

Input Impedance	
Mic	$\approx 4,000$ ohms
Line	$\approx 30,000$ ohms
Output Impedance	≈ 200 ohms
Maximum Input Level	
Mic	-30 dBu
Line	+20 dBu
Maximum Output Level*	
Line	+14 dBu
Maximum Gain	≈ 70 dB
Inactive Channel Attenuation	12dB or 20dB switch-selectable
Frequency Response	60 Hz to 30 kHz at -3dB points
Dynamic Range**	75 dB \pm 10 dB, dependent upon gain control settings
Equivalent Input Noise	-120 dBu (150 ohms) at maximum gain
Switch-selectable Options	Limiter (above 0dBu), Last Mic On
Microphone Phantom	+48V DC
Control Voltage Out	+5V DC
Power Requirement	230V AC, 100 mA, max. for external SMPS / +24V DC, 250mA max. for external DC supply
Operating Temperature	0° to 40° C
Dimensions (W x D x H) mm	482.6 x 135 x 44
Weight	2.2 Kg
Included Accessories	SMPS with connectors, Link Cable

* Master Level control set at maximum (fully clockwise). ** Input terminated with 150 ohms, A-weighted using Audio Precision System.

* Design and specification are subject to change without notice.

Ideal For:

Conference & Lectern, Houses of Worship,
Boardrooms, Courtrooms, Broadcast Studio,
Panel Discussions, Distance Learning,
Hotel Sound, Teleconferencing, Videoconferencing.



Studiomaster® is a registered trademark of Audioplus in India. © Copyright Audioplus, 2008. All rights reserved. Any unauthorised reproduction or use of logos, images or design elements is strictly prohibited by law. No part of the compilation may be reproduced in any manner or translated without written permission.

Brought to you by:
AUDIOPLUS

A1/A2, Giriraj Industrial Estate, Mahakali Caves Road, Andheri (East), Mumbai - 400 093. India Tel.: 022-42869000/001
Fax: 022-2687 1453 E-mail: info@audioplus-india.com Website: www.audioplus-india.com/www.studiomasterprofessional.com